



Woodside Park Road, Woodside Park, N12 8XD
Offers In The Region Of £645,000 Leasehold - Share of Freehold Council Tax
Band

REAL ESTATES

Est. 1981

Estate Agents · Residential Sales · Investments · Lettings

OFFERED CHAIN FREE - A well maintained 3 BEDROOM, 2 BATHROOM (1 EN SUITE) 1ST FLOOR flat in this purpose built block, ideally situated in the heart of Woodside Park, just a stone's throw Woodside Park's Northern Line tube station and within easy reach of local amenities at North Finchley High Road.

The spacious accommodation includes a lounge/dining room with access to balcony, fitted kitchen, guest cloakroom, utility room, 3 bedrooms and 2 bathrooms (1 en suite). The property also has the benefit of a RESERVED PARKING BAY and SHARE OF FREEHOLD.

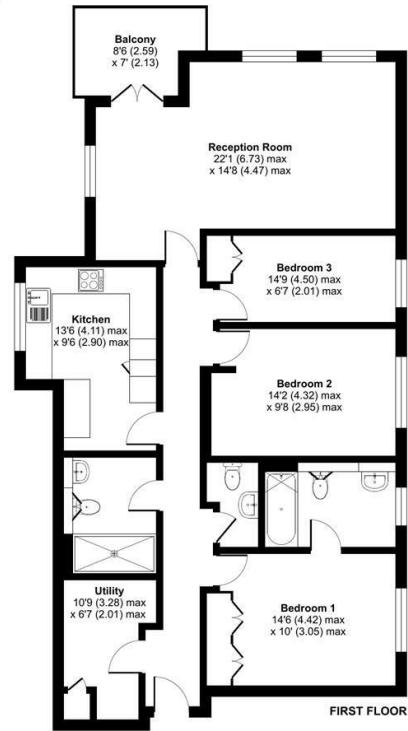
Viewing is highly recommended via Sole Agent REAL ESTATES 020 8445 6387.





Woodside Park Road, London, N12

Approximate Area = 1176 sq ft / 109.3 sq m
For identification only - Not to scale



Floor plan produced in accordance with RICS Property Measurement Standards incorporating International Property Measurement Standards (IPMS Residential). © richcom 2022. Produced for Real Estates - REF: 813893.

Energy Efficiency Rating		Current	Potential
Very energy efficient - lower running costs			
A	92-100		
B	81-91		
C	69-80		
D	55-68		
E	39-54		
F	21-38		
G	1-20		
Not energy efficient - higher running costs			
		77	82

EU Directive



Real Estates Woodside Park Office:
14/14a Sussex Ring
Woodside Park N12 7HX

ll : 020 8445 6387
e : info@realestates-wsp.co.uk
w : www.realestates-wsp.co.uk